

**ITEM 58. TRAFFIC TREATMENT – INTERSECTION UPGRADE – EPSOM  
ROAD AND DUNNING AVENUE ROSEBERY**

**TRIM RECORD NO: 2015/579415**

**RECOMMENDATION**

It is recommended that the Committee endorse the following intersection upgrade and parking changes in Epsom Road, Rosebery:

- (A) Kerb extensions on all four corners of the intersection of Epsom Road and Dunning Avenue; and
- (B) Reallocation of parking on the northern side of Epsom Road, between the points 10 metres and 50 metres (seven car spaces) east of Dunning Avenue as “Bus Zone”.

**DECISION**

**BACKGROUND**

The intersection of Epsom Road and Dunning Avenue, Rosebery is a four-way intersection controlled by ‘STOP’ restrictions across the two Dunning Avenue approaches.

Between 1 July 2009 and 30 June 2014, the “STOP” controlled intersection recorded a total of 14 crashes, including five injury crashes (and eight people injured). Of those 14 crashes, 11 were recorded as cross traffic crashes involving vehicles from adjacent directions at an intersection.

**COMMENTS**

The proposed kerb extensions will help mitigate the risk of cross traffic crashes by bringing “STOP” lines forward to improve sight lines for motorists.

The proposal is consistent with existing treatments for intersections in Rosebery and will enhance safety by:

- Narrowing lane widths and turning radius to reduce vehicle speeds approaching the intersection;
- Improving pedestrian access; and
- Improving sight lines for vehicles, cyclists and pedestrians at the intersection.

This proposal is part of the City's commitment to calm traffic and improve residential amenity.

To enable articulated buses to enter and exit the bus zone safely, the proposal will result in the loss of two unrestricted parking spaces on the northern side of Epsom Road, east of Dunning Avenue.

**CONSULTATION**

The City consulted local residents and businesses in the area. There were 34 letters sent out with no responses supporting the proposal and one response opposing the proposal.

The submission opposing the proposal is concern about impacts on businesses, the loss of unrestricted parking and potential conflicts with pedestrians and buses drawing into the bus zone.

The proposed treatment will improve safety at the location by reducing vehicle speeds and improve sight lines for vehicles, cyclists and pedestrians at the intersection. The reallocation of parking is to enable articulated buses to enter and exit the bus zone safely.

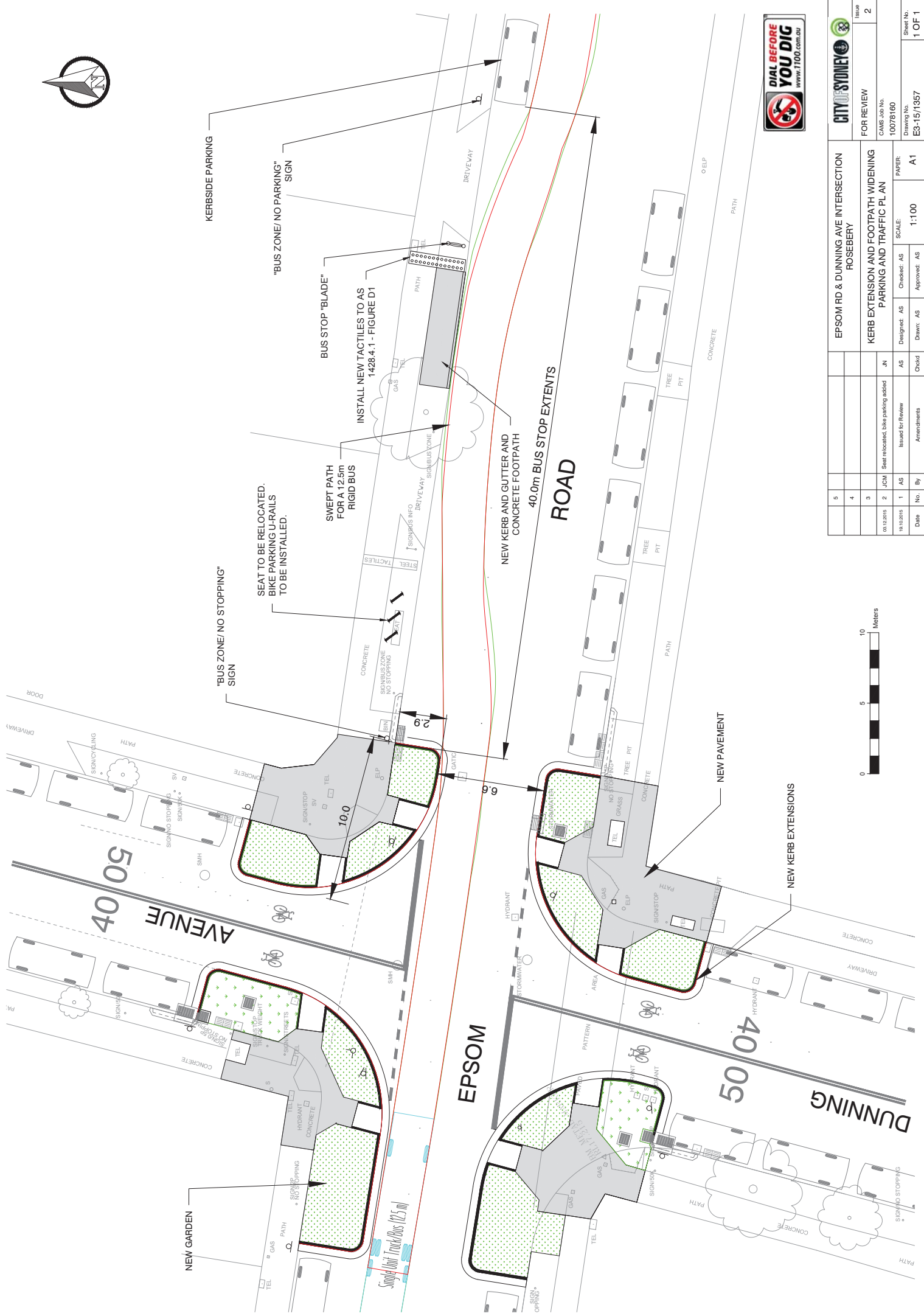
**FINANCIAL**

Funds are available in the current budget.

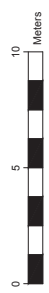
**ATTACHMENTS**

Traffic Treatment – Intersection Upgrade – Epsom Road and Dunning Avenue

Clement Lim, Senior Traffic Engineer



EPSOM RD & DUNNING AVE INTERSECTION ROSEBERY		Issue	2
KERB EXTENSION AND FOOTPATH WIDENING PARKING AND TRAFFIC PLAN		FOR REVIEW	
JCM Seat relocated, bike parking added		CAMS Job No.	10078160
AS Issued for Review		Drawing No.	E3-15/1357
AS Amendments		Scale:	1:100
AS Checked: AS		PAPER:	A1
AS Approved: AS		Sheet No.	1 OF 1



Date	No.	By	Amendments	Checked	Approved
00.12.2015	2	JCM	Seat relocated, bike parking added	JN	
19.10.2015	1	AS	Issued for Review	AS	AS

